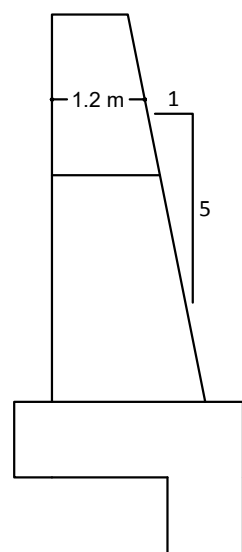
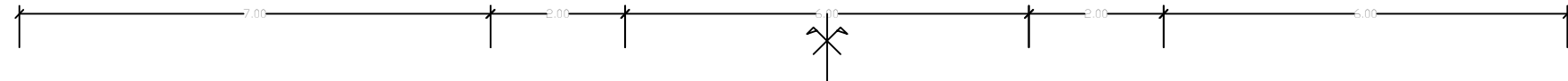


Profil n°: P-01
Abscisse : 0.00 m
Echelle des longueurs : 1/100
Echelle des altitudes : 1/100

rive droite



PC : 838.00 m

Altitudes TN		-14.00 - 848.64	-12.00 - 846.90	-10.00 - 845.22	-8.00 - 844.08	-6.00 - 843.87	-4.00 - 844.06	-2.00 - 842.27	0.00 - 841.45	2.00 - 841.55	4.00 - 842.64	6.00 - 843.78	8.00 - 844.15	10.00 - 845.31	12.00 - 845.84	14.00 - 846.26
Distances à l'axe TN		-14.00	-12.00	-10.00	-8.00	-6.00	-4.00	-2.00	0.00	2.00	4.00	6.00	8.00	10.00	12.00	14.00
Altitudes Projet			846.13				845.00	844.00	844.00		844.00	845.00				
Distances à l'axe Projet			-12.00				-5.00	-3.00	0.00		3.00	5.00			11.00	
Distances partielles Projet				7.00			2.00	3.00	3.00	2.00		6.00				
Altitudes Assise			844.13				841.00 839.00		839.00			839.00 841.00			844.13	
Distances à l'axe Assise			-12.00				-5.00		0.00			5.00			11.00	
Distances partielles Assise				7.00			5.00		5.00			6.00				